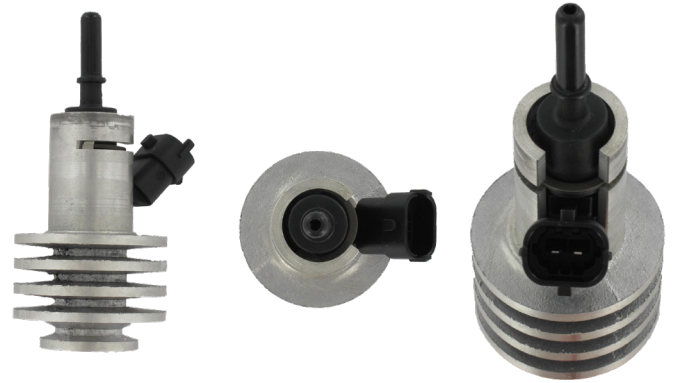


Adblue Injectors

Manufactured Range

AdBlue is a brand name for what is highly purified diesel exhaust fluid (DEF). This is injected into the exhaust where it mixes with exhaust gasses before entering the selective catalytic reduction converter to reduce harmful emissions.

Our aluminium heatsink design dissipates heat better than the OE part. This therefore reduces the temperature around injector reducing the chance of blockage, increasing injector life and long-term performance.



10

4.8m

Manufactured Parts in Range

Vehicles in Operation

Also Known As

Urea Injector
Urea Dosing Injector

Symptoms of Failure

Emissions Warning Light
Countdown to inoperation of vehicle

Causes of Failure

Crystallisation of Adblue Fluid

Top 10 in Range

Part Number	OE Reference	Key Application	VIO
32652	3A6E13250	Mazda CX-7	20,454
32653	18307807206	BMW 3 / X5 / X6	61,938
32654	3C0131113C	Audi. Seat. Skoda. VW A4 / A5 / A6 / A7 / A8 / Q5 / Q7. Alhambra. Yeti. Caddy / CC / Crafter / Passat / Sharan / Touareg	1,576,993
32655	1644900513	Mercedes E-Class / G-Class / GL-Class / GLE / GLK-Class / GLS / M-Class / R-Class / S-Class	359,308
32656	0004901013	Mercedes Sprinter / Vito	923,992
32657	0004900713	Mercedes CLS / E-Class / X-Class	364,023
32659	296304A800	Hyundai H-1 / H350 / i800 / iLoad / Santa Fe / Tucson	109,330
32660	93457779	Opel. Renault. Vauxhall Movano / Vivaro. Master / Megane / Talisman / Trafic. Movano . Vivaro	845,258
32661	C2D28660	Jaguar. Land Rover E-Pace / XE / XF. Discovery Sport / Evoque	462,002
32662	1902467	Ford Ranger	119,042

Data correct at time of publishing